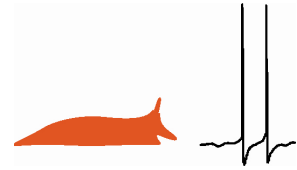




# Neuroethology



a laboratory experience at the Friday Harbor Labs  
studying how neurons produce adaptive behavior

This 5-week graduate\* course will focus on learning techniques in neuroethological research such as behavioral recording and analysis, electrophysiology of intact and reduced preparations, and pharmacology, immunohistochemistry, and confocal microscopy of neural structures. Each pair of students will explore a project that helps them to learn the techniques they need in their own research. The course research will focus on the nudibranch sea slug *Tritonia diomedea* because of its amenability to neuroethological analysis and benefits as a teaching model. Lectures will focus primarily on background necessary to understand fundamental techniques in neurophysiology as well as behavioural analysis.

\*advanced undergraduates can also apply

## Instructors

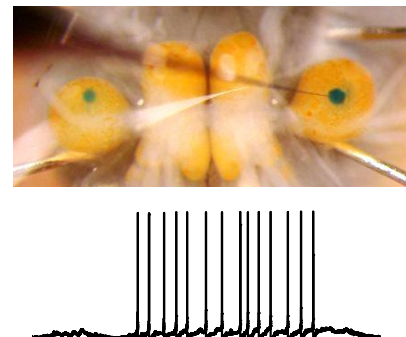
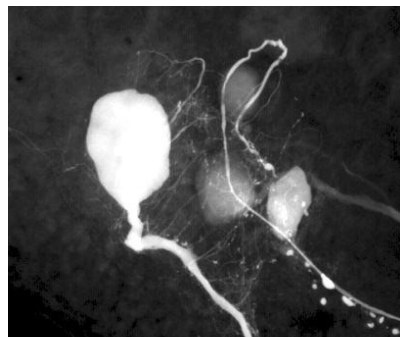
Dr. James Murray, Cal State U. East Bay  
Dr. Russell Wyeth, St. Francis Xavier U.  
Dr. Shaun Cain, Eastern Oregon U.

## Schedule

June 18 - July 20, 2012  
5 weeks; 9 credits  
application deadline Feb 1, 2012

MORE INFO - google "FHL Neuroethology 2012" or:

<http://depts.washington.edu/fhl/studentSummer2012.html#SumA-4>



**Financial Aid:** Students facing financial constraints may apply for financial aid support from Friday Harbor Labs. Awards from FHL are based on both financial need and academic merit. Applicants for financial aid support from FHL do not need to be U.S. citizens and do not need to be currently matriculated at University of Washington.