

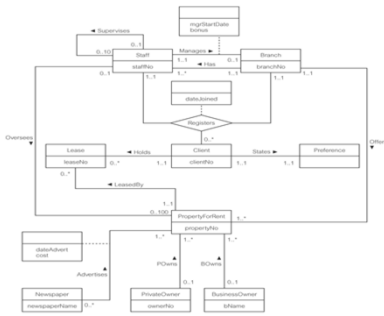
Chapter 12

Entity-Relationship Modeling

Chapter 12 - Objectives

- How to use Entity-Relationship (ER) modeling in database design.
- Basic concepts associated with ER model.
- Diagrammatic technique for displaying ER model using Unified Modeling Language (UML).
- How to identify and resolve problems with ER models called connection traps.
- How to build an ER model from a requirements specification.

ER diagram of Branch user views of *DreamHome*



Concepts of the ER Model

- Entity types
- Relationship types
- Attributes

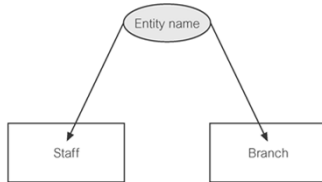
Entity Type

- Entity type
 - Group of objects with same properties, identified by enterprise as having an independent existence.
- Entity occurrence
 - Uniquely identifiable object of an entity type.

Examples of Entity Types

Physical existence	
Staff	Part
Property	Supplier
Customer	Product
Conceptual existence	
Viewing	Sale
Inspection	Work experience

ER diagram of Staff and Branch entity types



7

Person Education © 2014

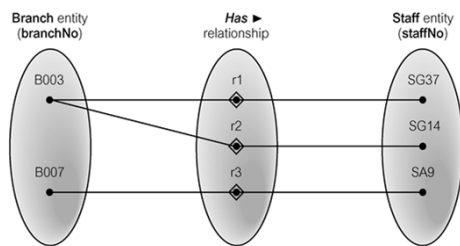
Relationship Types

- **Relationship type**
 - Set of meaningful associations among entity types.
- **Relationship occurrence**
 - Uniquely identifiable association, which includes one occurrence from each participating entity type.

8

Person Education © 2014

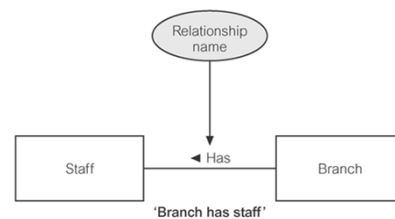
Semantic net of *Has* relationship type



9

Person Education © 2014

ER diagram of Branch *Has* Staff relationship



10

Person Education © 2014

Relationship Types

- **Degree of a Relationship**
 - Number of participating entities in relationship.
- **Relationship of degree :**
 - two is binary
 - three is ternary
 - four is quaternary.

11

Person Education © 2014

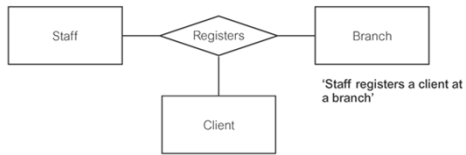
Binary relationship called *POwns*



12

Person Education © 2014

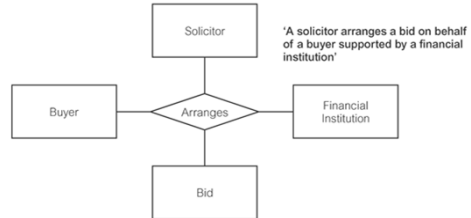
Ternary relationship called *Registers*



13

Person Education © 2014

Quaternary relationship called *Arranges*



14

Person Education © 2014

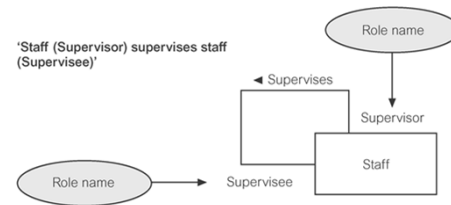
Relationship Types

- **Recursive Relationship**
 - Relationship type where *same* entity type participates more than once in *different* roles.
 - Relationships may be given role names to indicate purpose that each participating entity type plays in a relationship.

15

Person Education © 2014

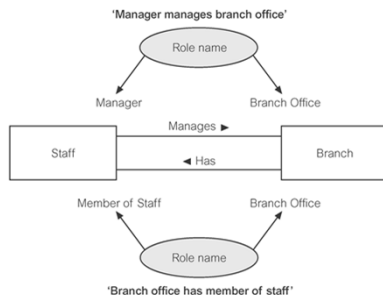
Recursive relationship called *Supervises* with role names



16

Person Education © 2014

Entities associated through two distinct relationships with role names



17

Person Education © 2014

Attributes

- **Attribute**
 - Property of an entity or a relationship type.
- **Attribute Domain**
 - Set of allowable values for one or more attributes.

18

Person Education © 2014

Attributes

- **Simple Attribute**
 - Attribute composed of a single component with an independent existence.
- **Composite Attribute**
 - Attribute composed of multiple components, each with an independent existence.

19

Person Education © 2014

Attributes

- **Single-valued Attribute**
 - Attribute that holds a single value for each occurrence of an entity type.
- **Multi-valued Attribute**
 - Attribute that holds multiple values for each occurrence of an entity type.

20

Person Education © 2014

Attributes

- **Derived Attribute**
 - Attribute that represents a value that is derivable from value of a related attribute, or set of attributes, not necessarily in the same entity type.

21

Person Education © 2014

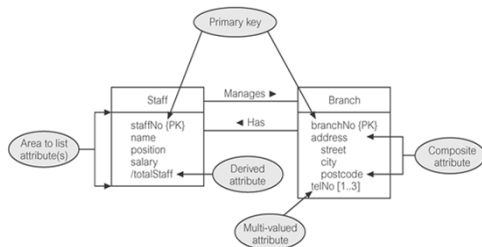
Keys

- **Candidate Key**
 - Minimal set of attributes that uniquely identifies each occurrence of an entity type.
- **Primary Key**
 - Candidate key selected to uniquely identify each occurrence of an entity type.
- **Composite Key**
 - A candidate key that consists of two or more attributes.

22

Person Education © 2014

ER diagram of Staff and Branch entities and their attributes



23

Person Education © 2014

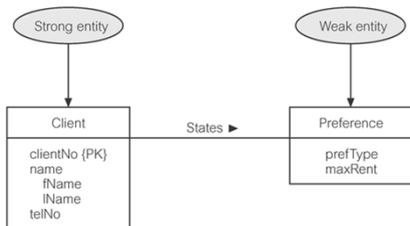
Entity Type

- **Strong Entity Type**
 - Entity type that is *not* existence-dependent on some other entity type.
- **Weak Entity Type**
 - Entity type that is existence-dependent on some other entity type.

24

Person Education © 2014

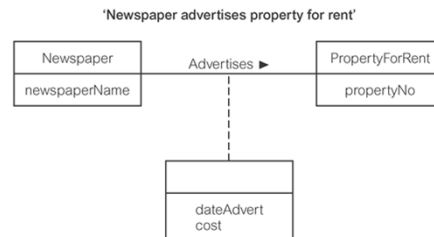
Strong entity type called Client and weak entity type called Preference



25

Person Education © 2014

Relationship called Advertises with attributes



26

Person Education © 2014

Structural Constraints

- Main type of constraint on relationships is called *multiplicity*.
- Multiplicity - number (or range) of possible occurrences of an entity type that may relate to a single occurrence of an associated entity type through a particular relationship.
- Represents policies (called *business rules*) established by user or company.

27

Person Education © 2014

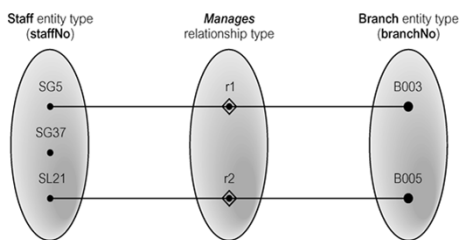
Structural Constraints

- The most common degree for relationships is binary.
- Binary relationships are generally referred to as being:
 - one-to-one (1:1)
 - one-to-many (1:*)
 - many-to-many (*:*)

28

Person Education © 2014

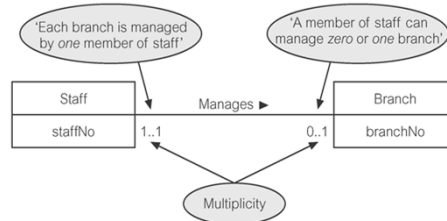
Semantic net of Staff Manages Branch relationship type



29

Person Education © 2014

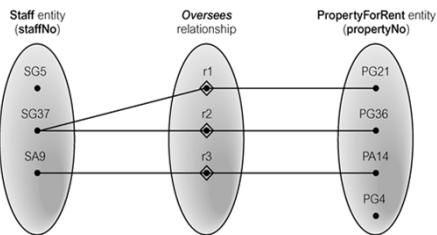
Multiplicity of Staff Manages Branch (1:1) relationship



30

Person Education © 2014

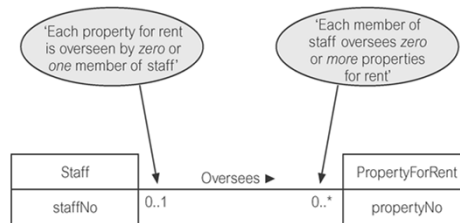
Semantic net of Staff Oversees PropertyForRent relationship type



31

Person Education © 2014

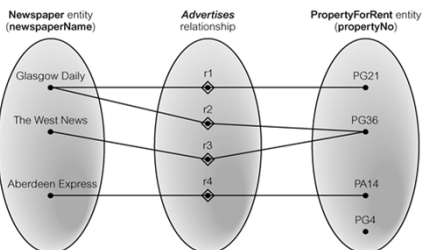
Multiplicity of Staff Oversees PropertyForRent (1:*) relationship type



32

Person Education © 2014

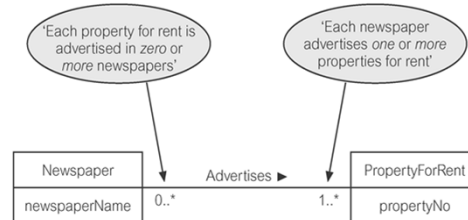
Semantic net of Newspaper Advertises PropertyForRent relationship type



33

Person Education © 2014

Multiplicity of Newspaper Advertises PropertyForRent (*:*) relationship



34

Person Education © 2014

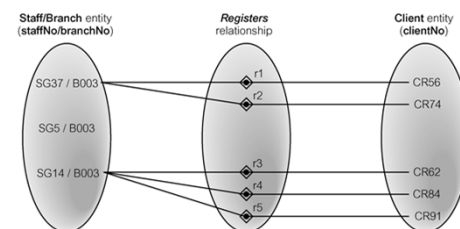
Structural Constraints

- Multiplicity for Complex Relationships
 - Number (or range) of possible occurrences of an entity type in an n -ary relationship when other ($n-1$) values are fixed.

35

Person Education © 2014

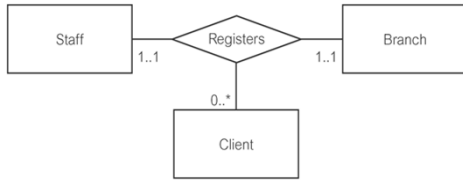
Semantic net of ternary Registers relationship with values for Staff and Branch entities fixed



36

Person Education © 2014

Multiplicity of ternary *Registers* relationship



37

Person Education © 2014

Summary of multiplicity constraints

Alternative ways to represent multiplicity constraints	Meaning
0..1	Zero or one entity occurrence
1..1 (or just 1)	Exactly one entity occurrence
0..* (or just *)	Zero or many entity occurrences
1..*	One or many entity occurrences
5..10	Minimum of 5 up to a maximum of 10 entity occurrences
0, 3, 6-8	Zero or three or six, seven, or eight entity occurrences

38

Person Education © 2014

Structural Constraints

- Multiplicity is made up of two types of restrictions on relationships: *cardinality* and *participation*.

39

Person Education © 2014

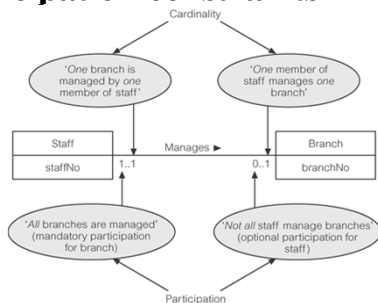
Structural Constraints

- **Cardinality**
 - Describes maximum number of possible relationship occurrences for an entity participating in a given relationship type.
- **Participation**
 - Determines whether all or only some entity occurrences participate in a relationship.

40

Person Education © 2014

Multiplicity as cardinality and participation constraints



41

Person Education © 2014

Problems with ER Models

- Problems may arise when designing a conceptual data model called *connection traps*.
- Often due to a misinterpretation of the meaning of certain relationships.
- Two main types of connection traps are called *fan traps* and *chasm traps*.

42

Person Education © 2014

Problems with ER Models

- **Fan Trap**
 - Where a model represents a relationship between entity types, but pathway between certain entity occurrences is ambiguous.
- **Chasm Trap**
 - Where a model suggests the existence of a relationship between entity types, but pathway does not exist between certain entity occurrences.

43

Person Education © 2014

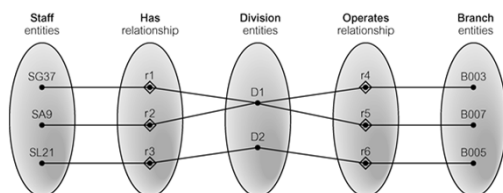
An Example of a Fan Trap



44

Person Education © 2014

Semantic Net of ER Model with Fan Trap

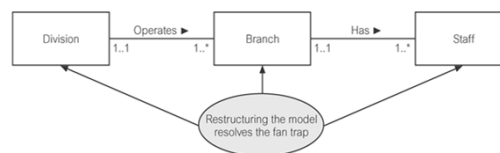


- At which branch office does staff number SG37 work?

45

Person Education © 2014

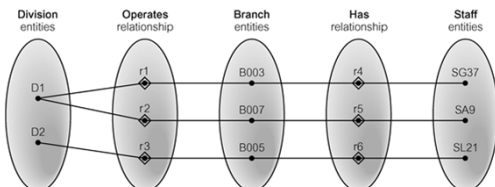
Restructuring ER model to remove Fan Trap



46

Person Education © 2014

Semantic Net of Restructured ER Model with Fan Trap Removed

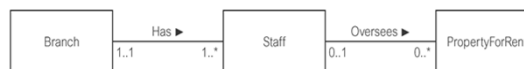


- SG37 works at branch B003.

47

Person Education © 2014

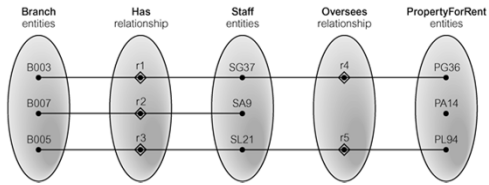
An Example of a Chasm Trap



48

Person Education © 2014

Semantic Net of ER Model with Chasm Trap

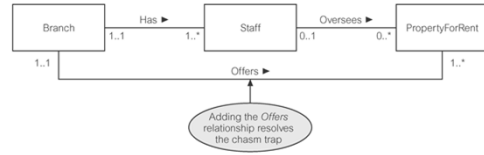


- At which branch office is property PA14 available?

49

Person Education © 2014

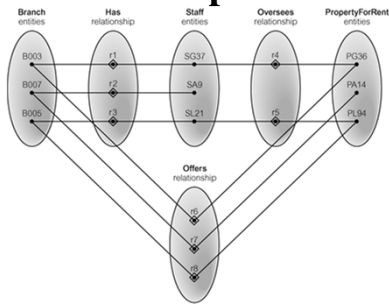
ER Model restructured to remove Chasm Trap



50

Person Education © 2014

Semantic Net of Restructured ER Model with Chasm Trap Removed



51

Person Education © 2014