

Observation of the density minimum in deeply supercooled confined water

Dazhi Liu, Yang Zhang, Chia-Cheng Chen, Chung-Yuan Mou, Peter H. Poole, and Sow-Hsin Chen

PNAS published online May 25, 2007;
doi:10.1073/pnas.0701352104

This information is current as of May 2007.

E-mail Alerts	This article has been cited by other articles: www.pnas.org#otherarticles
Rights & Permissions	Receive free email alerts when new articles cite this article - sign up in the box at the top right corner of the article or click here .
Reprints	To reproduce this article in part (figures, tables) or in entirety, see: www.pnas.org/misc/rightperm.shtml
	To order reprints, see: www.pnas.org/misc/reprints.shtml

Notes:

Observation of the density minimum in deeply supercooled confined water

Dazhi Liu*, Yang Zhang*, Chia-Cheng Chen†, Chung-Yuan Mou†, Peter H. Poole‡, and Sow-Hsin Chen*§

*Department of Nuclear Science and Engineering, Massachusetts Institute of Technology, Cambridge, MA 02139; †Department of Chemistry, National Taiwan University, Taipei 106, Taiwan; and ‡Department of Physics, St. Francis Xavier University, Antigonish, NS, Canada B2G 2W5

Edited by H. Eugene Stanley, Boston University, Boston, MA, and approved April 16, 2007 (received for review February 13, 2007)

Small angle neutron scattering (SANS) is used to measure the density of heavy water contained in 1D cylindrical pores of mesoporous silica material MCM-41-S-15, with pores of diameter of 15 ± 1 Å. In these pores the homogenous nucleation process of bulk water at 235 K does not occur, and the liquid can be supercooled down to at least 160 K. The analysis of SANS data allows us to determine the absolute value of the density of D₂O as a function of temperature. We observe a density minimum at 210 ± 5 K with a value of 1.041 ± 0.003 g/cm³. We show that the results are consistent with the predictions of molecular dynamics simulations of supercooled bulk water. Here we present an experimental report of the existence of the density minimum in supercooled water, which has not been described previously.

liquid–liquid critical point | nanopores | small angle neutron scattering | Widom line

Of the many remarkable physical properties of liquid water (1), the density maximum is probably the most well known. The density maximum of H₂O at $T_{\max} = 277$ K (284 K in D₂O) is one of only a few liquid-state density maxima known (2) and the only one found to occur in the stable liquid phase above the melting temperature. Water's density maximum is a dramatic expression of the central role played by hydrogen bonding in determining the properties of this liquid: as temperature T decreases through the region of the density maximum, an increasingly organized and open four-coordinated network of hydrogen bonds expands the volume occupied by the liquid, overwhelming the normal tendency of the liquid to contract as it is cooled.

The density of bulk supercooled liquid water decreases rapidly with T before the onset of homogeneous crystal nucleation (at ≈ 235 K) precludes further measurements. The density curve of ice Ih lies below that of the liquid and almost certainly sets a lower bound on the density that the supercooled liquid could attain if nucleation were avoided, because ice Ih represents the limiting case of a perfectly ordered tetrahedral network of hydrogen bonds. Significantly, the expansivity of ice Ih in this T range is positive (3); i.e., the density increases as T decreases (see Fig. 2). The low density amorphous (LDA) ice that forms from deeply supercooled liquid water at the (in this case extremely weak) glass transition approaches very closely the structure of a “random tetrahedral network” (RTN) and exhibits a number of ice-like properties, including a “normal” (i.e., positive) expansivity (4). If the structure of deeply supercooled water also approaches that of a RTN, it is therefore possible that a density minimum occurs in the supercooled liquid (5).

Consistent with this possibility, a number of recent molecular dynamics (MD) computer simulation studies predict that a density minimum occurs in water (H₂O) (5–10). These studies achieve deep supercooling without crystal nucleation due to the small system size and short observation time explored, compared with experiment. In the literature, the five-site transferable interaction potential (TIP5P) for water is considered to be the most accurate model for reproducing experimental data when used with a simple spherical cutoff for the long-ranged electrostatic interactions in MD simulation (11). The ST2 potential has been widely used in simulation

of water since early 1970s (12). As shown in Fig. 2, the TIP5P-E (9) model of water exhibits a density minimum at a temperature T_{\min} , which is approximately 70 K below T_{\max} at atmospheric pressure. The ST2 model also predicts that a density minimum occurs at approximately this temperature (6–8, 10).

Density minima in liquids are even more rare than density maxima. We are aware of reports of density minima in only a few liquid systems, such as Ge–Se mixtures (13). Confirming the existence of a density minimum in water would reveal much about the supercooled state of this important liquid. Its occurrence would signal the reversal of the anomalies that set in near the density maximum; i.e., that mildly supercooled water is anomalous but that deeply supercooled water “goes normal.” Observing a density minimum also would have significant implications for the possibility that a liquid–liquid phase transition (LLPT) occurs in supercooled water (1, 14), along the same lines as that recently argued for vitreous silica (15).

Results

In this report, we present the experimental observation of a density minimum in supercooled water (D₂O), confined in the nanochannels of mesoporous silica, occurring at $T_{\min} = 210 \pm 5$ K with a density value of 1.041 ± 0.003 g/cm³ as shown in Fig. 1. Our sample is a fully hydrated (D₂O) MCM-41-S-15 powder, which is made of a micellar templated mesoporous silica matrix and has 1D cylindrical pores arranged in a 2D hexagonal lattice (16, 17). In this experiment, we chose the material with a pore diameter of 15 ± 1 Å because the differential scanning calorimetry data show no freezing peak down to 160 K for the fully hydrated sample. The small angle neutron scattering (SANS) diffraction pattern from the sample consists of two parts: intergrain interfacial scattering and a Bragg peak coming from the 2D hexagonal internal structure of the grains. Based on the detailed analysis (presented in *Methods*), we find that the height of the Bragg peak is related to the scattering length density (sld) of D₂O inside the silica pores, and the sld of D₂O is proportional to its mass density $\rho_{D_2O}^m$. Hence, we are able to determine the density of water (D₂O) by measuring the temperature-dependent neutron scattering intensity $I(Q)$. The highest value corresponds to the known density maximum of D₂O at ≈ 284 K. Most significantly, we find a density minimum situated at $T_{\min} = 210 \pm 5$ K with a value of 1.041 ± 0.003 g/cm³.

Discussion

Fig. 2 compares the density minimum found here with that found in Paschek's MD simulation study of TIP5P-E (9). The correspon-

Author contributions: S.-H.C. designed research; D.L. and Y.Z. performed research; D.L., C.-C.C., C.-Y.M., and S.-H.C. contributed new reagents/analytic tools; D.L. analyzed data; and D.L., Y.Z., C.-Y.M., P.H.P., and S.-H.C. wrote the paper.

The authors declare no conflict of interest.

This article is a PNAS Direct Submission.

Abbreviations: LDA, low density amorphous; LLPT, liquid–liquid phase transition; MD, molecular dynamics; SANS, small angle neutron scattering; sld, scattering length density; TIP5P, five-site transferable interaction potential.

§To whom correspondence should be addressed. E-mail: sowhsin@mit.edu.

© 2007 by The National Academy of Sciences of the USA

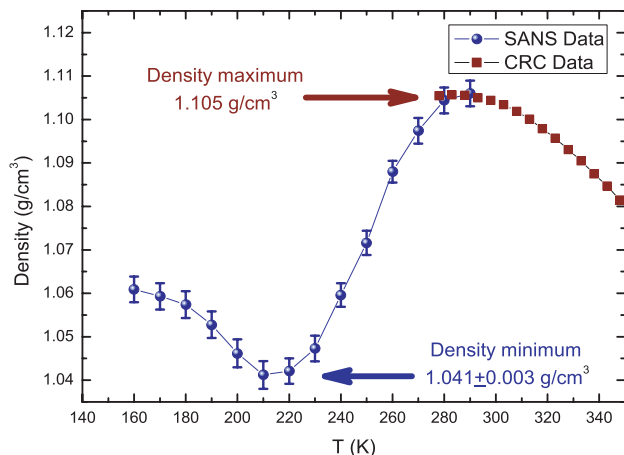


Fig. 1. Average D₂O density inside the 15 ± 1 Å pore measured by SANS method as a function of temperature. A smooth transition of D₂O density from the maximum value at 284 ± 5 K to the minimum value at 210 ± 5 K is clearly shown. The filled squares are the density data for bulk D₂O taken from the *CRC Handbook* (22).

dence in T with our experimental data are excellent: for TIP5P-E: $T_{\max} - T_{\min}$ is ≈ 70 K, compared with 80 K in the present study. Note also that the ratio of the maximum to minimum density is 1.05 for TIP5P-E, compared with 1.06 for our data.

The minimum density we find (1.041 g/cm^3) also compares well with the density of LDA ice, to which the deeply supercooled liquid will transform at the glass transition, if crystallization is avoided. The density of H₂O LDA ice is 0.94 g/cm^3 (4), corresponding to $\approx 1.04 \text{ g/cm}^3$ for D₂O LDA ice, assuming a 10.6% density difference (18). Also of note is that a super-Arrhenius to Arrhenius dynamic crossover phenomenon has been experimentally observed in this confined water (H₂O) system at 225 K (16, 17); hence, T_{\min} occurs in a regime of strong liquid behavior, below this crossover. Together, these observations strongly suggest that the structure of water below T_{\min} is approaching that of a fully connected, defect-free hydrogen-bond network, in which the anomalies of water, so prominent near the melting temperature, disappear.

The finding of a density minimum also has significant implications for the proposal that a LLPT occurs in supercooled water

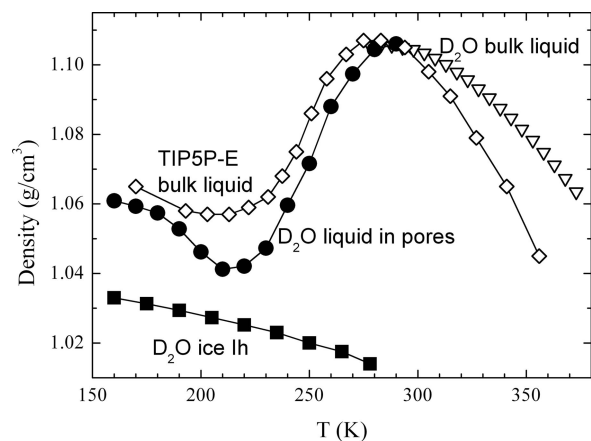


Fig. 2. Comparison of density vs. temperature curves at ambient pressure for bulk liquid D₂O (open triangles) [*CRC Handbook* (22)], confined liquid D₂O (filled circles) from this work, D₂O ice Ih (filled squares) (2), and MD simulations of liquid TIP5P-E water (open diamonds) (9). The density values for the TIP5P-E model (which is parameterized as model of H₂O) have been multiplied by 1.1 to facilitate comparison with the behavior of D₂O.

(1, 14). These implications arise because of formal relationships that exist between density anomalies and response functions, such as the isothermal compressibility κ_T and the isobaric specific heat C_P (19). For example, κ_T is known experimentally to increase with decreasing T near T_{\max} , and it has been shown that this must be true in any system upon crossing a line of density maxima having negative slope in the T - P plane. When applied to the vicinity of a density minimum, these same thermodynamic relations predict that κ_T must be decreasing with T at T_{\min} , under the physically plausible assumption that the line of density minima also has a negative slope in the T - P plane. In combination, these two constraints on the behavior of κ_T mean that κ_T must have a maximum between T_{\min} and T_{\max} . A κ_T maximum implies that other response functions, such as the specific heat C_P , also will attain extrema in the range between T_{\min} and T_{\max} . A C_P peak in this range is consistent with the dynamical crossover observed at 225 K (16, 17). Furthermore, the occurrence of an inflection point in our data for the T dependence of the density (see Fig. 1) directly establishes that the thermal expansion coefficient $\alpha_p = -1/\rho(\partial\rho/\partial T)_P$ has a minimum between T_{\min} and T_{\max} . We know for fact that α_p has a peak when we cross the Widom line above the liquid-vapor transition of steam (20). This reinforces the plausibility that there is a Widom line emanating from the liquid-liquid critical point in supercooled water passing between T_{\min} and T_{\max} , as was indicated in our previous experiment, which detects the dynamic crossover phenomenon at 225 K at ambient pressure (H. E. Stanley, personal communication).

This pattern of thermodynamic behavior, in which density anomalies bracket extrema in response functions at ambient pressure, is entirely consistent with that found in MD simulations of TIP5P-E and ST2, both of which exhibit an LLPT at elevated pressure (see in particular figure 2 of ref. 10). Conversely, MD models of water in which a density minimum has not been observed are also models in which a LLPT has not been identified. In the T - P plane, the lines of response function extrema necessarily meet at the critical point of the LLPT, if it exists. The present results, combined with those of refs. 16 and 17, demonstrate that the temperature window in which these extrema occur can be identified and accessed at ambient pressure and that the system remains an ergodic liquid throughout this range. Therefore, if the critical point of an LLPT exists at higher pressure, there is considerable promise that it too occurs in the liquid regime and can be detected by mapping the equation of state for the density through SANS experiments of the kind described here, conducted at higher pressure.

Overall, our results demonstrate that SANS is a powerful method for determining the average density of D₂O in cylindrical pores of MCM-41-S-15 silica matrix. It remains an open question whether the density minimum we find in confined water can be confirmed in bulk water. However, given the importance of confined water, particularly in biological systems, our demonstration of the disappearance of water's anomalies in confinement at <210 K has broad implications for understanding the low-temperature properties of a wide range of aqueous microstructured systems, as well as bulk water itself.

Materials and Methods

SANS experiments were performed at NG3, a 30-m SANS spectrometer, in the National Institute of Standards and Technology Center for Neutron Research (NCNR). The incident monochromatic neutrons have an average wave length of $\lambda = 5$ Å with a fractional spread of $\Delta\lambda/\lambda = 10\%$. The sample to detector distance is fixed at 6 m, covering the range of magnitudes of neutron wave vector transfer (Q) from 0.008 to 0.40 Å^{-1} . This Q range covers the high Q part of the interfacial scattering between different grains and

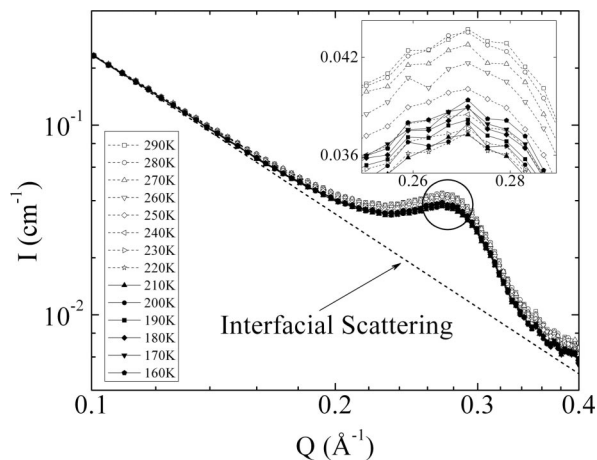


Fig. 3. SANS intensity distribution, as a function of Q , of MCM-41-S-15 plotted in a log-log scale. The dashed straight line represents the interfacial scattering coming from the surfaces of the grains of the silica crystallites. Each scattering curve displays a power law region and a first-order diffraction peak situated at $Q_1 = 0.287 \text{ \AA}^{-1}$. The diffraction peak is due to Bragg diffraction from the (01) plane of the 2D hexagonal lattice made of parallel water cylinders contained in grains of the silica crystallites, which are oriented with the direction of the cylindrical axes parallel to the direction of the incident neutron beam. The height of the diffraction peak is proportional to the square of the difference of sld between D_2O inside the cylindrical pore and the silica matrix. The height of the peak decreases steeply when the sample is cooled down in the temperature range from 280 to 220 K, indicating a steep decrease of density of D_2O . However, the height increases significantly again in the temperature range from 210 to 160 K, where the density minimum was found by a detail analysis.

the Bragg peak due to the hexagonal array of silica pores within a grain. The amplitude of the latter is used as an indicator of the density of water in the sample.

Our sample consisted of a fully hydrated (D_2O) MCM-41-S-15 powder, which is made of micellar templated mesoporous silica matrices and has 1D cylindrical pores arranged in a 2D hexagonal lattice (16, 17). We synthesized MCM-41-S-15 by reacting preformed β -zeolite seeds [formed with tetraethylammonium hydroxide (TEAOH)] with decyltrimethylammonium bromide solution (C_{10}TAB ; Acros Organics, Geel, Belgium) and then transferring the mixture into an autoclave at 150°C for 18 h. Solid samples were then collected by filtration, washed with water, dried at 60°C in air overnight, and calcined at 560°C for 6 h.

Table 1. Fitted model parameters and the measured density of D_2O as a function of temperature

T, K	C_1	$R, \text{\AA}$	$2\pi/a, \text{\AA}^{-1}$	$\Gamma, \text{\AA}^{-1}$	$\rho, \text{g/cm}^3$
160	0.004269	8.09	0.287	0.0328	1.061
170	0.004237	8.09	0.287	0.0328	1.059
180	0.004201	8.09	0.287	0.0328	1.057
190	0.004111	8.09	0.287	0.0328	1.053
200	0.003984	8.09	0.287	0.0325	1.046
210	0.003889	8.09	0.287	0.0324	1.041
220	0.003907	8.09	0.287	0.0326	1.042
230	0.004006	8.09	0.287	0.0330	1.047
240	0.004244	8.09	0.288	0.0337	1.060
250	0.004483	8.09	0.288	0.0341	1.071
260	0.004819	8.09	0.288	0.0346	1.088
270	0.005017	8.09	0.288	0.0348	1.097
280	0.005168	8.09	0.288	0.0347	1.104
290	0.005203	8.09	0.288	0.0344	1.106

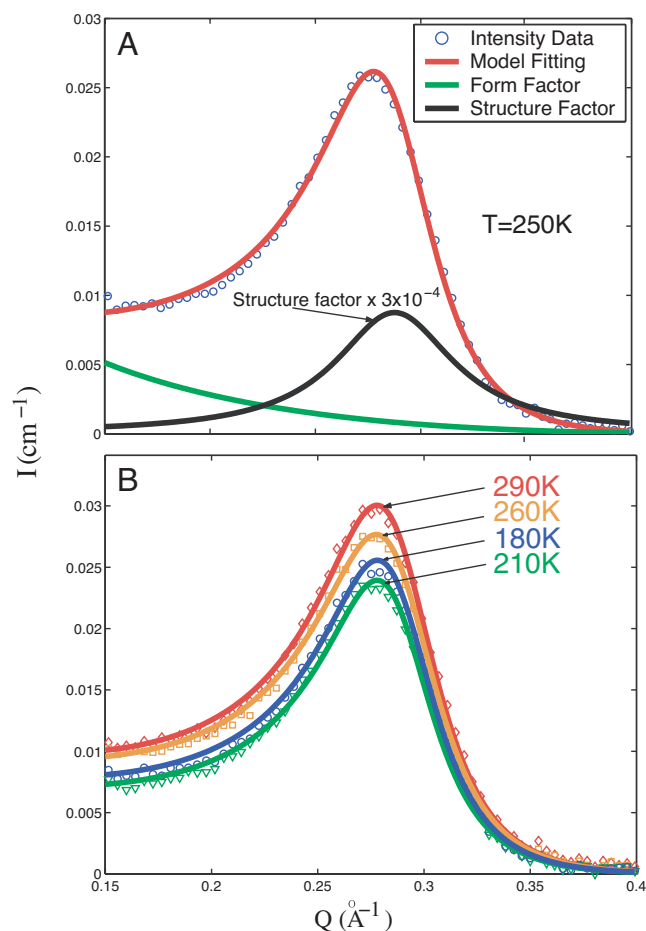


Fig. 4. Model analysis of SANS intensity distribution. (A) The blue circles show the SANS data (at 250 K) with the contribution of the interfacial (surfaces of the grains) scattering subtracted. The red solid line represents the fitted curve using the model given in the text. The black line represents the structure factor $S(Q)$ of the 2D hexagonal lattice. The green line represents the form factor $P(Q)$ of the cylindrical tube of D_2O column. [To make the figure clearer, the magnitude of $S(Q)$ is multiplied by a factor 3×10^{-4} .] (B) SANS data and their fitted curves (solid lines) for different temperatures. Four curves are selected to show the good agreement between the model analyses and the experimental data.

The molar ratios of the reactants were $\text{SiO}_2:\text{NaOH}:\text{TEAOH}:\text{C}_{10}\text{TMAB}:\text{H}_2\text{O} = 1:0.075:0.285:0.22:52$.

The sample was hydrated by exposing it to water vapor in a closed chamber until it reaches the full hydration level of 0.5 g of D_2O per 1 g of silica. We made measurements at 14 temperatures between 160 and 290 K in a step of 10 K to monitor the variation of the density in the supercooled region (see Fig. 3).

The powder sample of MCM-41-S-15 we used in the experiment consists of crystallites, or grains (approximately spherical) of the order of micrometer size. Each grain was made up of a 2D hexagonal matrix of parallel cylindrical silica pores with an inter-pore distance a . After full hydration, all of the pores were filled with water (D_2O), which has a considerably different sld (a factor of 2 larger) from that of the silica matrix. The direction of the cylindrical axis in each grain was randomly distributed in space. The diffraction pattern from the sample therefore consisted of two parts: (i) intergrain interfacial scattering, the Q -dependence of which follows a power law; and (ii) a Bragg peak at $Q_1 = 2\pi/a$ coming from the 2D hexagonal internal structure of the grains.

Fig. 3 shows a peak situated at $Q_1 = 0.287 \text{ \AA}^{-1}$, which corresponds to the center-to-center distance between the water columns $a = 2\pi/Q_1 \approx 21.9 \text{ \AA}$. In the range of $0.1\text{--}0.2 \text{ \AA}^{-1}$, a

straight line in log–log scale represents the asymptotic part of the interfacial scattering.

In a SANS experiment, the measured Q -vector is essentially perpendicular to the incident neutron direction. For a scattering unit (particle), which is a long cylinder with a small circular cross section (such as the present case), the scattering geometry essentially selects out only those cylinders which happen to lie with their cylindrical axes parallel to the incident neutron direction. Consequently the direction of the measured Q -vector is nearly perpendicular to the cylindrical axis. With this understanding, the neutron scattering intensity distribution $I(Q)$ is given by $I(Q) = nV_p^2(\Delta\rho)^2P(Q)S(Q)$, where n is the number of scattering units (water cylinders) per unit volume in the sample, V_p is the volume of the scattering unit, $\Delta\rho = \rho_p - \rho_e$ is the difference of sld between the scattering unit ρ_p and the environment ρ_e , $P(Q)$ is the normalized particle structure factor (or form factor) of the water cylinder, and $S(Q)$ is the interparticle structure factor (of a 2D hexagonal lattice). Note that the sld of the confining material MCM-41-S-15 is $3.618 \times 10^{10} \text{ cm}^{-2}$ and is approximately independent of temperature in the temperature range we study (as evidenced by the fact that the position of Q_1 changes by $<0.5\%$ for the entire temperature range studied; see Table 1). The sld of the scattering unit ρ_p can be rewritten as $\rho_p = \rho_{D_2O}^m N_A \sum_i b_i / M_w$, where N_A is Avogadro's number, M_w is the molecular weight of D_2O , b_i is the coherent scattering length of the i th D_2O molecule in the scattering unit, and $\rho_{D_2O}^m$ is the mass density of D_2O . The sld of the environment ρ_e has been determined by a separate contrast variation experiment. Based on the above relations, we find that all of the variables in the expression for $I(Q)$ are independent of temperature except for $\Delta\rho$ because it involves a temperature-dependent parameter $\rho_{D_2O}^m$. Hence, we are able to determine the density of water (D_2O) by measuring the temperature-dependent neutron scattering intensity $I(Q)$.

The normalized particle structure factor $P(Q)$ of a long ($QL > 2\pi$) cylinder is given by $P(Q) = \pi QL(2J_1(QR)/QR)^2$ (21), where L and R represent the length and the radius of the cylinder respectively, and $J_1(x)$ is the first-order Bessel function of the first kind. As an example, the form of $P(Q)$ is depicted as a green solid line in Fig. 4A. The structure factor $S(Q)$ of a perfect 2D hexagonal lattice is a series of delta functions (Bragg peaks) situated at $Q_1 = 2\pi/a$, $Q_2 = 2\sqrt{3}\pi/a$, \dots , where a is the length of the primitive lattice vector of the 2D hexagonal lattice. All of the Bragg peaks will be broadened due to defects of the lattice and the finite size of the grains. The broadening can be well approximated by a Lorentzian function. The black solid line in Fig. 4A shows the $S(Q)$ in our model. Therefore, the neutron intensity we measured in the Q_1 peak region ($0.2\text{--}0.4 \text{ \AA}^{-1}$), after subtraction of the interfacial scattering, is expressed as

$$I(Q) = nV_p^2 \left(\frac{N_A \sum_i b_i}{M_w} \rho_p^m - \rho_e \right)^2 \frac{\pi}{QL} \left(\frac{2J_1(QR)}{QR} \right)^2 \left(C \frac{\frac{1}{2}\Gamma}{\left(Q - \frac{2\pi}{a} \right)^2 + \left(\frac{1}{2}\Gamma \right)^2} \right), \quad [1]$$

where Γ is the FWHM and C is a temperature-independent constant. Combining all constants, we obtain

$$I(Q) = C_1 \frac{J_1(QR)^2}{Q^3 R^2} \left(\frac{\frac{1}{2}\Gamma}{\left(Q - \frac{2\pi}{a} \right)^2 + \left(\frac{1}{2}\Gamma \right)^2} \right), \quad [2]$$

where the new prefactor

$$C_1 = 4CnV_p^2 \frac{\pi}{L} \left(\frac{N_A \sum_i b_i}{M_w} \right)^2 \left(\rho_p^m - \left(\frac{M_w}{N_A \sum_i b_i} \right) \rho_e \right)^2 \propto (\rho_{D_2O}^m - C_0)^2,$$

and

$$C_0 = \left(\frac{M_w}{N_A \sum_i b_i} \right) \rho_e = 0.6273 \text{ g/cm}^3$$

determined by ρ_e of MCM-41-S-15.

By fitting the model described above to our data for neutron intensity $I(Q)$, the parameters C_1 , R , a , and Γ are obtained. The fitted curves for different temperatures show the good agreement of the model with the experimental data in Fig. 4B. The square root of the fitting parameter C_1 and the mass density of D_2O have a linear relationship according to the expression of C_1 above. Extracting C_1 from the analysis, we obtain the absolute value of the density of D_2O in the pores by assuming it has the same density as bulk D_2O at $284 \pm 5 \text{ K}$. The fitted diameter of 16 \AA of the water cylinder agrees closely with the diameter determined by nitrogen adsorption ($15 \pm 1 \text{ \AA}$). Table 1 and Fig. 1 show the D_2O density vs. temperature. The plot shows a smooth transition of D_2O density from a higher to a lower value. The higher value corresponds to the known density maximum of D_2O at $\approx 284 \text{ K}$. Most significantly, we find a density minimum situated at $T_{\min} = 210 \pm 5 \text{ K}$ with a value of $1.041 \pm 0.003 \text{ g/cm}^3$.

To confirm that the density minimum is a real physical phenomenon that does not depend on the fitting model we use, we plotted the raw data together with the fitted curves in Fig. 4B. It can be directly seen from the graph that the intensity of the peak at 180 K is visibly higher than the intensity at 210 K , demonstrating that the density minimum is not an artifact of the model fitting.

We thank Dr. Y. Liu for help in carrying out this experiment at the National Institute of Standards and Technology Center for Neutron Research and Prof. H. Eugene Stanley for many fruitful conversations on the subject of anomalies of water and the L-L critical point. S.-H.C.'s group at Massachusetts Institute of Technology is supported by Department of Energy Grant DE-FG02-90ER45429. C.-Y.M.'s group is supported by Taiwan National Science Council Grant NSC95-2120-M-002-009. P.H.P.'s group is supported by Canada's Natural Sciences and Engineering Research Council and the Canada Research Chair Program. We benefited from affiliation with the European Union Marie-Curie Research and Training Network on Arrested Matter.

1. Debenedetti PG, Stanley HE (2003) *Phys Today* 56:40–46.
2. Angell CA, Kanno H (1976) *Science* 193:1121–1122.
3. Rotger K, Endriss A, Ihringer J, Doyle S, Kuhs WF (1994) *Acta Crystallogr B* 50:644–648.
4. Angell CA (2004) *Annu Rev Phys Chem* 55:559–583.
5. Angell CA, Bressel RD, Hemmati M, Sare EJ, Tucker JC (2000) *Phys Chem Chem Phys* 2:1559–1566.
6. Brovchenko I, Geiger A, Oleinikova A (2001) *Phys Chem Chem Phys* 3:1567–1569.
7. Brovchenko I, Geiger A, Oleinikova A (2003) *J Chem Phys* 118:9473–9476.

8. Brovchenko I, Geiger A, Oleinikova A (2005) *J Chem Phys* 123:044515.
9. Paschek D (2005) *Phys Rev Lett* 94:217802.
10. Poole PH, Saika-Voivod I, Sciortino F (2005) *J Phys Condens Matter* 17:L431–L437.
11. Mahoney MW, Jorgensen WL (2000) *J Chem Phys* 112:8910–8922.
12. Stillinger FH, Rahman A (1974) *J Chem Phys* 60:1545–1577.
13. Ruska J, Thurn H (1976) *J Non-Cryst Solids* 22:277–290.
14. Poole PH, Sciortino F, Essmann U, Stanley HE (1992) *Nature* 360:324–328.
15. Sen S, Andrus RL, Baker DE, Murtagh MT (2004) *Phys Rev Lett* 93:125902.

16. Liu L, Chen S-H, Faraone A, Yen C-W, Mou C-Y (2005) *Phys Rev Lett* 95:117802.
17. Xu L, Kumar P, Buldyrev SV, Chen S-H, Poole PH, Sciortino F, Stanley HE (2005) *Proc Natl Acad Sci USA* 102:16558–16562.
18. Kell GS (1967) *J Chem Eng* 12:66–69.
19. Sastry S, Debenedetti PG, Sciortino F, Stanley HE (1996) *Phys Rev E* 53:6144–6154.
20. Anisimov MA, Sengers JV, Levelt Sengers JMH (2004) in *Physical Chemistry in Water, Steam and Hydrothermal Solutions*, eds Palmer DA, Fernandez-Prini R, Harvey AH (Elsevier, Amsterdam), Chap 2, pp 29–72.
21. Chen S-H, Lin T-L, Wu CF (1987) in *Physics of Amphiphilic Layers*, eds Meunier J, Langevin D, Boccara N (Springer, Berlin), pp 241–252.
22. Lide DR, ed (2007) *CRC Handbook of Chemistry and Physics* (Taylor and Francis, Boca Raton, FL), pp 6–8.